



# Bed Coverings

2025 CATALOG



# Top Sheets

## TS PISSARRO

Blending classic and contemporary designs, these sheets add texture with a soft cotton-like hand. Broad stripes woven along the width create a striking impression for guests.

- 200 GSM puff jacquard microfiber
- Prism 1" wide stripe pattern
- 1" rolled hems with mitered corners
- Color-coded bottom hem thread
- Center-aligned label for easier bed making
- Commercial wash tested
- DuraWhite™ lasting whiteness

**Sizes:** Full/Queen 98" x 103"  
King 114" x 103"

**Color:**  White



# Top Sheets



## TS QUINN

A modern rendition of a classic waffle weave with a twist. The small-scale pattern interpretation adds rich texture.

- 230 GSM waffle weave pucker jacquard
- 1" rolled hems with mitered corners
- Color-coded bottom hem thread
- Center-aligned label for easier bed making
- Commercial wash tested
- DuraWhite™ lasting whiteness

<b>Sizes:</b>	Twin	72" x 103"
	Full/Queen	98" x 103"
	King	114" x 103"

<b>Color:</b>	<input type="checkbox"/> White
	<input type="checkbox"/> Grey Mist



# Top Sheets

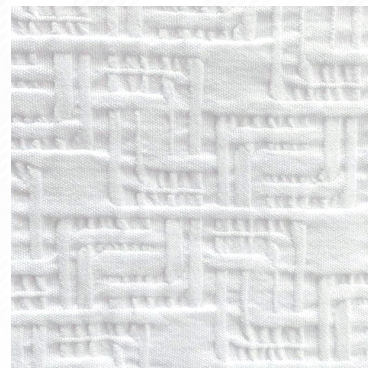
## TS REMBRANDT

The distinctive texture is achieved using a special two-way weaving technique that adds depth to the look and feel of the fabric. The pattern invokes both uniform and freeform elements; a new take on traditional basketweave.

- 235 GSM pucker jacquard microfiber
- Two-way weave enhances texture
- 1" rolled hems with mitered corners
- Color-coded bottom hem thread
- Center-aligned label for easier bed making
- Commercial wash tested
- DuraWhite™ lasting whiteness

**Sizes:** Full/Queen 98" x 103"  
King 114" x 103"

**Color:**  White



# Top Sheets



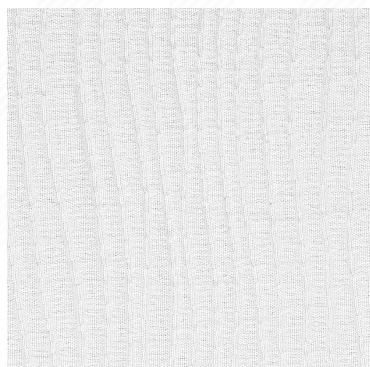
## TS RENOIR

Offering a rich look in our textured ripple weave pattern, this distinctive fabric adds weight to the bed without excessive bulk.

- 210 GSM puff jacquard microfiber
- Ripple weave pattern
- 1" rolled hems with mitered corners
- Center-aligned label for easier bed making
- Commercial wash tested
- DuraWhite™ lasting whiteness

**Sizes:** Full/Queen 98" x 103"  
King 114" x 103"

**Color:**  White





# Top Sheets

## TS SAXON

Woven in a traditional stripe pattern, this provides an elegant appearance and unique texture. No need to iron – revel in the wrinkles!

- 185 GSM woven seersucker fabric
- $\frac{3}{8}$ " wide stripe pattern
- 1" top and bottom hems
- Color-coded bottom hem thread
- Center-aligned label for easier bed making
- Commercial wash tested
- DuraWhite™ lasting whiteness

**Sizes:** Twin      72" x 111"  
Full/Queen    96" x 111"  
King            112" x 111"

**Color:**  White



# Top Sheets



## TS SICILIAN

Combines the look and feel of a beautiful cotton rich fabric with the ease of care and lasting whiteness of microfiber.

- Heavyweight 200 GSM woven microfiber
- $\frac{3}{8}$ " wide Damask Stripe
- Luxurious 4" top hem with 1" bottom hem
- Color-coded bottom hem thread
- Center-aligned label for easier bed making
- Commercial wash tested
- DuraWhite™ lasting whiteness

<b>Sizes:</b>	Twin	72" x 110"
	Full/Queen	96" x 110"
	King	112" x 110"

**Color:**  White





# Coverlet

## ASTORIA

Incredibly soft yarns offer a cotton-like hand feel while beautifully finished hems complete the look of this coverlet, all in a classic Ogee pattern.

- 280 GSM matelassé woven microfiber
- 1.25" wide elegant Ogee pattern
- Single needle stitched 2" hems with mitered corners
- Center-aligned label for easier bed making
- Commercial wash tested
- DuraWhite™ lasting whiteness

**Sizes:** Full/Queen 98" x 102"  
King 114" x 102"

**Color:**  White





# FLORENTIS COLLECTION

A distinctive botanical leaf quilt pattern made of soft and resilient microfiber fabric with exceptional durability.



- 85 GSM brushed Pongee microfiber fabric with 100 GSM down-alt fill
- Washes & dries quickly and easily— saving time, money & energy usage
- Wrinkle, stain & shrink resistant

- Color:**
- White
  - Sand
  - Sail

## Quilt Coverlet

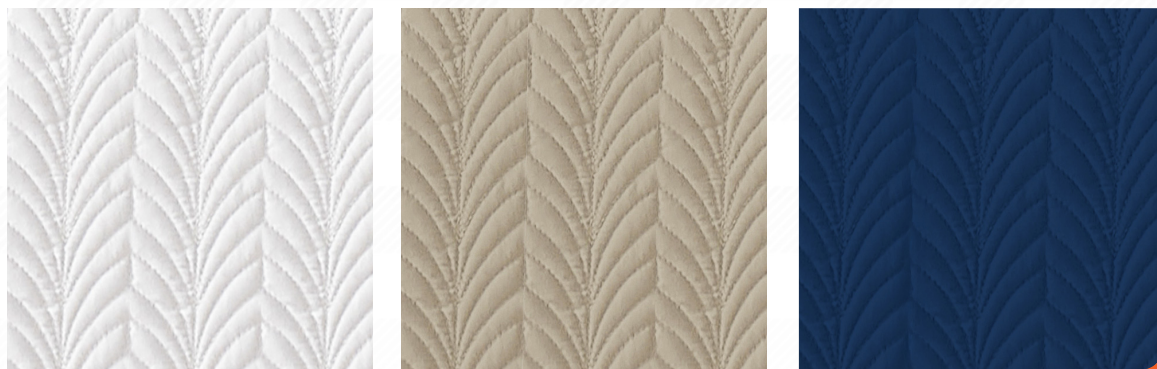
Finished with solid fabric 2" flange. Oversized 94" length for generous drape.

<b>Sizes:</b>	Twin	66" x 94"
	Full/Queen	90" x 94"
	King	108" x 94"

## Quilt Sham

With 6" overlap envelope closure and quilted 2" flange. Pillow inserts are **not** included.

<b>Sizes:</b>	Standard/Queen	24" x 32"
	King	24" x 41"



# RHAPSODY COLLECTION

Diamond quilt coverlet and shams provide a distinctive guest experience for any hotel property. Made of soft and resilient microfiber fabric.



- 85 GSM brushed Pongee microfiber fabric with 100 GSM down-alt fill
- Washes & dries quickly and easily— saving time, money & energy usage
- Wrinkle, stain & shrink resistant

- Color:**
-  Grey
  -  Persian Blue
  -  True White
  -  Truffle

## Quilt Coverlet

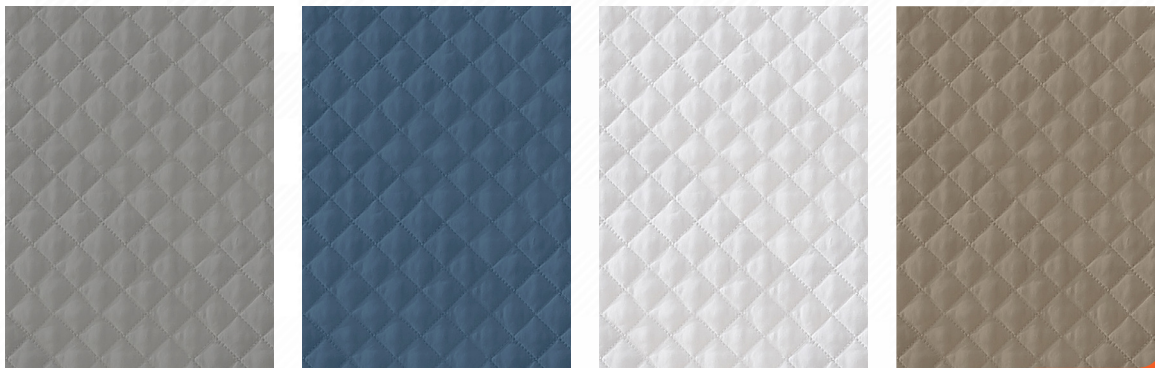
Finished with solid fabric 2" flange. Oversized 94" length for generous drape.

<b>Sizes:</b> Twin	66" x 94"
Full/Queen	90" x 94"
King	108" x 94"

## Quilt Sham

With 6" overlap envelope closure and quilted 2" flange. Pillow inserts are **not** included.

<b>Sizes:</b> Standard/Queen	24" x 32"
King	24" x 41"



# WESLEY COLLECTION

Our woven faux linen fabric extends the lifespan of your box spring or simply just gives your bed frame a more polished look.

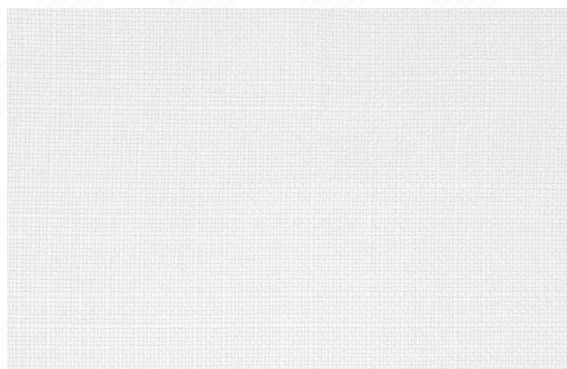


**Color:**  Caviar  
 White

**Sizes:** Full XL 53" x 79" + 12"  
 Queen 59" x 79" + 12"  
 King 75" x 79" + 12"

## Box Spring Cover

- 9" side drop with 3" underwrap
- 1" elastic all-around for a tailored fit
- 3" fabric decking strips along top of platform



## Fitted Bed Skirt

- 14" drop with 1" hem along bottom
- 4" decking strips with butt corners
- 6" head flap to prevent shifting
- Easy care and fast-drying for energy savings

# KLEIN COLLECTION

Our innovative four-way stretch fabric is the perfect foundation for a beautiful bed. Textured diamond patterns or cross-dyed heathered textures are available in a range of colors to perfectly coordinate with any carpeting and furnishing.

## DIAMOND Box Spring Cover



Bluestone



Ember



Khaki



Pecan



Smoke



Teak

- 300 GSM Polyester/Spandex blend fabric
- Deckless construction allows for easy installation over mattress
- Fits box springs from 7" to 9" deep
- Hidden seam at head of box spring
- Reinforced elastic on each corner
- Durability and commercial wash tested

**Sizes:** Full/Queen 59" x 79" + 9"  
King 75" x 79" + 9"

## DIAMOND Bolster Pillow



Bluestone



Ember



Khaki



Pecan



Smoke



Teak

- 300 GSM Polyester/Spandex blend fabric
- Microfiber lined shell with knife edge finish
- Color-match 24" long hidden zipper
- Pillow insert with 14oz fill weight included

**Size:** 14" x 26"

## HELIX Box Spring Cover



Canyon



Malachite



Moss



Paprika

- 300 GSM Polyester/Spandex blend fabric
- Deckless construction allows for easy installation over mattress
- Fits box springs from 7" to 9" deep
- Hidden seam at head of box spring
- Reinforced elastic on each corner
- Durability and commercial wash tested

**Sizes:** Full/Queen 59" x 79" + 9"  
King 75" x 79" + 9"

### GET A QUOTE



[sales@fabtex.com](mailto:sales@fabtex.com)



800.778.2791

### ORDER ONLINE

Coming soon for **select items** only



[fabtexshop.com](http://fabtexshop.com)

